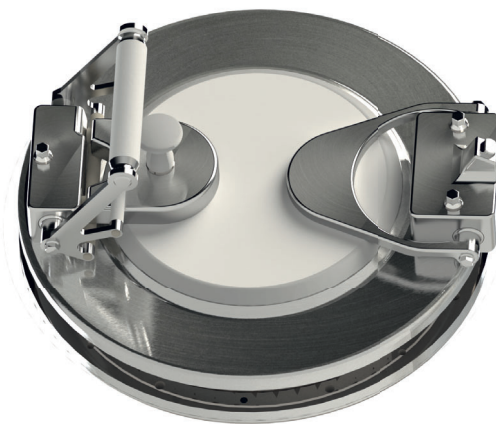


# ABC Transfer<sup>®</sup> Alpha Port

A STEP CHANGE IN THE WORLD OF RAPID TRANSFERS

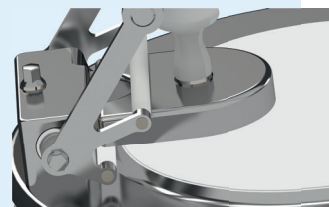
The ABC Transfer Alpha port has been designed to improve operational ergonomics, increase the level of sterility assurance in production, and simplify its maintenance. Although the port is manually operated, it is compatible with gloveless filling lines and can be operated by a robotic arm.

The ABC Transfer Alpha port comes in 2 versions with an internal or external opening, and can be integrated in single or double-wall isolators, including double glass-wall isolators.



## ○ Sterility assured

The utilization of our unique Easyglide™ seal removes the requirement for suction removal holes. The ABC Transfer Alpha port is 100% leak tight ( $4.5 \times 10^{-3}$  std cm<sup>3</sup>/s at 4000 Pa). You no longer need to worry about managing and validating unnecessary filters.



## ○ 0.5 µm surface rugosity

All surfaces exposed to the process feature a 0.5 µm surface rugosity. This includes the door, machined with 21 CFR and USP class VI PET.

## ○ No hidden surfaces

The ABC Transfer Alpha door has been designed to ensure that production operators can easily clean every single square millimeter. This also guarantees that the H<sub>2</sub>O<sub>2</sub> can easily reach every point and be quickly eliminated during a bio-decontamination cycle.

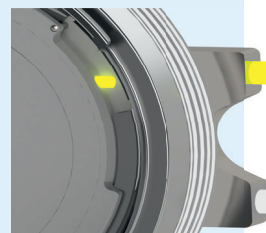
## ○ Reduced ring of concern

The Easyglide™ seal reduces the size of the ring of concern (only 119mm<sup>2</sup> on a 190 diameter) as well as the rotation torque. The Easyglide™ seal is firmly assembled between two rigid and fixed plates, making the ABC Transfer Alpha port easier and safer to operate.



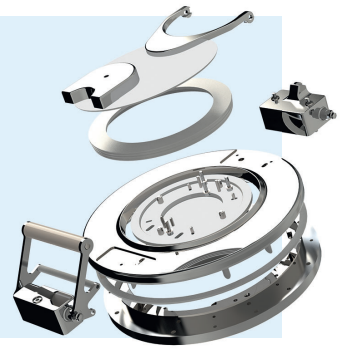
## ○ Four safety locks

In addition to the conventional Beta container lock, beta container door presence lock, and beta container presence lock, ABC Transfer has added an interlock between the alpha and the beta door. The Beta door cannot jam the closure of the alpha RTP or fall in the process.



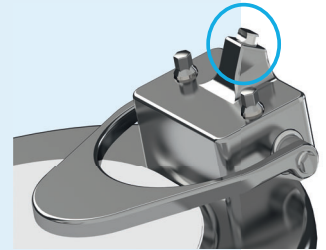
- Modular design for easy maintenance

Each module can be disassembled and reassembled with just one tool thanks to the standardization of the screws. The Alpha Easyglide™ seal can be exchanged in just 5 minutes, without any risk of misplacement or damage. With ABC Transfer, your maintenance crew has one less problem to worry about.



- Door angle programmable opening between 90° and 180°

Because the integration of Alpha ports in isolators is always complex, ABC Transfer has developed a unique “door angle programmable opening” feature. By the manual adjustment of a simple screw, you can set the maximum angle at which you want the door to open to between 90° and 180°. Integrating the ABC Transfer Alpha port next to a 90° glass wall is simplified. The risk of damaging the isolator wall when the port is opened too forcefully is eliminated.



- Compatible with conventional RTP brands

The ABC Transfer Alpha port is compatible with conventional RTP brands and fits in place of some of them. There is no need to de-standardize your isolator assembly process.

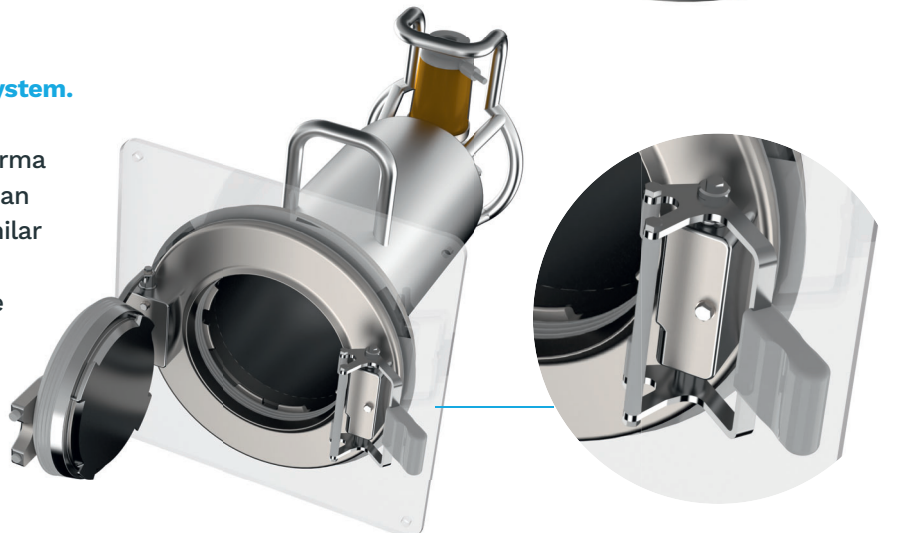
## Internal Opening Alpha Port

**With ABC Transfer, opening an Alpha port from inside has never been so easy. Regardless of its position on the isolator, the ABC Transfer Alpha port can be opened and closed with no effort.**

**Your health and safety officers are happier and your quality managers have one less problem to worry about when conducting an inspection.**

- A unique opening and closing system.

ABC Transfer has worked with ergonomics specialists and pharma production operators to design an opening and closing system similar to that of a cap bottle opener. The hand and wrist motions are natural and effortless. The risk to the process sterility is thus reduced.



### ● A customizable handle

The ABC Transfer Alpha door handle can also be customized. As standard, it is provided in PET or 316L stainless steel materials. Its size and shape can be adapted to fit your specific requirements. It can also be operated by a robotic gripping tool.

### ● Lighter than conventional RTP systems.

The 190 diameter weighs only 12 kg and produces 25 kg CO<sub>2</sub> less during its manufacturing process than conventional RTP brands. It is therefore not only easier for isolator assembly operators to integrate the ABC Alpha port, but also cleaner for the environment.



## External Opening Alpha Port ...and your dreams come true

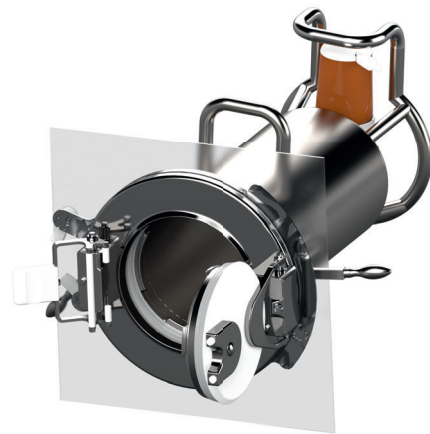
Although the idea of opening an Alpha door from the outside of an isolator is not new, the innovative and simple approach adopted by ABC Transfer is. This is possible because we have gone back to the drawing board to design our Alpha port.

### ● Reduced risks of particulate or biological contamination aligned with cGMP

The ability to open and close your RTP from outside the isolator greatly reduces operator interference with the laminar flow inside the isolator, and therefore reduces the risk of particulate or biological contamination.

### ● More ergonomic process

which reduces operator fatigue and therefore operator errors in production.



### ● Simplified validation process

The manual operation of the ABC Transfer external opening port removes the complexity of bringing utilities to the RTP and simplifies the process validation. It is simple to install, simple to validate, simple to operate, and simple to maintain.

### ● Possibility to upgrade an internal opening port to an external opening port

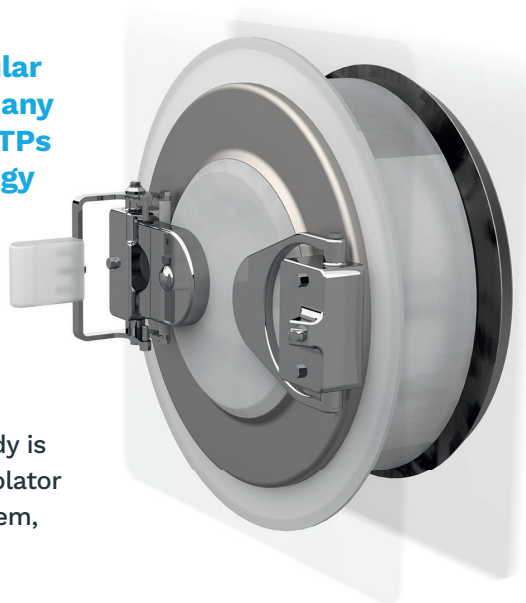
Thanks to the modularity of the ABC Transfer external opening Alpha port, the levers can be customized to fit your specific requirements. It is even possible to upgrade an internal opening ABC Transfer port to an external opening ABC Transfer port, at your factory!



## Double-wall isolator assembly

The introduction of double-wall isolators, in particular glass wall isolators, has provided customers with many operational and regulatory benefits. Conventional RTPs were designed at a time when this isolator technology did not yet exist.

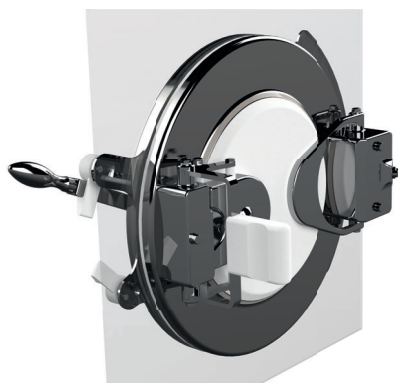
ABC Transfer has designed their RTP range to be integrated on double-wall as well as on single-wall isolators.



### Alpha port built in 2 separate bodies.

One body is installed inside the isolator while the second body is integrated outside the isolator. A channel, specific to each isolator brand, ensures the connection and leak tightness of the system, which is fixed to the outside wall.

### No need to build a complicated stainless steel plate on your isolator wall to accommodate your RTP. Airflow re-circulation is simplified. Process visibility is greatly improved. Cleaning and maintenance are simplified.



### Compatibility with other options

The ABC Transfer double-wall isolator assembly is compatible with the internal opening and external opening options, as well as with the ABC Transfer range of Beta containers and Beta single-use ported bags.

### ABC Transfer Alpha Port technical information

MODEL	AVAILABILITY			WEIGHT (KG)	DIAMETER	
	Internal opening	External opening	Double-wall		Nominal (mm)	Useful (mm)
105	Q2 2022	Q2 2022	Q2 2022	-	-	-
190	Available	Available	Available	12kg	190mm	170mm
270	Available	Available	Available	17kg	270mm	250mm